

12<sup>TH</sup> ANNUAL

SING  
FOR SITEMAN

WEDNESDAY, OCTOBER 20, 2021  
7 PM

*PRESENTED BY*

**Edward Jones<sup>®</sup>**

*HOSTED BY*

James Berges &  
Elizabeth Mannen Berges

*TO BENEFIT*



Thank you for being part of Sing for Siteman on our 12th Anniversary. Whether you are a musician, volunteer, patient, caregiver, sponsor, family member, or music fan, you are an important member of a larger team committed to easing the burden of cancer on our patients. Support from this event has resulted in innovative treatments, which have inspired hope and created cures for many members of our community.

On behalf of the patients and staff of Siteman Cancer Center, we greatly appreciate your partnership in this cause.

**Dr. Timothy J. Eberlein**

*Director, Alvin J. Siteman Cancer Center*

## **ABOUT SING FOR SITEMAN**

Sing for Siteman was launched in 2010 by a small group of St. Louisans to engage artists in the fight against cancer. Sing for Siteman features outstanding artists from across North America, performing a wide range of musical selections to honor cancer patients and benefit critical research at Siteman Cancer Center.

## **TONIGHT'S BENEFICIARY**

The Alvin J. Siteman Cancer Center at Washington University School of Medicine and Barnes-Jewish Hospital is changing the face of cancer through new technologies and targeted therapies. Gifts to Siteman's Discovery Fund allow leadership to support promising new areas of research, making a difference in the lives of our patients and the people who love them. Proceeds from tonight's event will support early detection and screening programs through Siteman Cancer Center's Program for the Elimination of Cancer Disparities (PECaD) within Siteman's Discovery Fund.

**Thank you for joining us for this special evening!**

**#SINGFORSITEMAN**

# SING FOR SITEMAN

## PROGRAM FOR THE EVENING

### WELCOME

Kim Eberlein and Susan Sherman - *Event Co-Chairs*

Gene Dobbs Bradford - *President and CEO, Jazz St. Louis*

Andrew Jorgensen - *General Director, Opera Theatre of Saint Louis*

### “Parigi, o cara” from *La traviata*

Avery Boettcher, Moisés Salazar, and Madeline Slettedahl

### REMARKS

Dr. Timothy Eberlein - *Director, Siteman Cancer Center*

Dr. Lannis Hall - *Radiation Oncologist, Siteman Cancer Center,  
Honorary Physician Chair*

Amber Simpson - *Host and Honorary Chair*

### “Pace, pace” from *La forza del destino*

Angel Azzarra and Madeline Slettedahl

### “Granada” by Agustín Lara

Moisés Salazar and Madeline Slettedahl

### TESTIMONIAL

Joanna Haydon - *Cancer Survivor*

## **“Mira, o Norma” from *Norma***

Angel Azzarra, Sophia Maekawa, and Madeline Slettedahl

## **“Seguedilla” from *Carmen***

Sophia Maekawa and Madeline Slettedahl

## **REMARKS**

Amber Simpson

## **SPECIAL GUEST APPEARANCES**

Al Roker - *NBC's Today*

Ellie Kemper - *Actress*

## **TESTIMONIAL**

Sherrill Jackson - *Cancer Survivor*

*Co-Founder and Board President, The Breakfast Club, Inc.*

## **“All Things You Are” by Jerome Kern**

Antonio Foster, Kendrick Smith, and Bernard Terry

## **“O soave fanciulla” from *La bohème***

Avery Boettcher, Moisés Salazar, and Madeline Slettedahl

## **“Caravan” by Juan Tizol and Duke Ellington**

Antonio Foster, Kendrick Smith, and Bernard Terry

## **CLOSING**

Amber Simpson

## **“You’ll Never Walk Alone” from *Carousel***

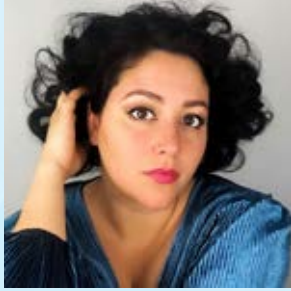
Angel Azzarra and Madeline Slettedahl

**Tonight’s translations are located in the back of the program.**

## 2021 ARTISTS

*Sing for Siteman offers special thanks to Opera Theatre of Saint Louis and Jazz St. Louis for making the involvement of these world-class artists possible.*

### Opera Theatre of Saint Louis Artists



#### ANGEL AZZARRA, SOPRANO

Considered by *Operavore* and Classical WQXR as 40 Under 40: A New Generation of Superb Opera Singers, Angel Azzarra began her musical studies in Mississippi, later earning her master's degree at the Manhattan School of Music as a full scholarship voice student. Ms. Azzarra is now a sought-after chamber musician and interpreter of new and obscure works.



#### AVERY BOETTCHER, SOPRANO

Avery Boettcher is an up-and-coming soprano currently based in Detroit, MI where she has been residing as the resident soprano in Michigan Opera Theatre's Studio Artist Program. A native to Appleton Wisconsin, Ms. Boettcher is building the foundation of a lucrative career with great care and deliberation. In 2020 and 2021, Ms. Boettcher was a member of the Gerdine Young Artist Program with Opera Theatre of Saint Louis.



#### SOPHIA MAEKAWA, MEZZO-SOPRANO

Japanese-American mezzo-soprano Sophia Maekawa is currently pursuing her Bachelor's of Music Degree at the Curtis Institute of Music. 2021 was her second year of being a Gerdine Young Artist at Opera Theatre of Saint Louis, where she covered multiple roles in the world premiere production of the *New Works, Bold Voices Lab*.



## MOISÉS SALAZAR, TENOR

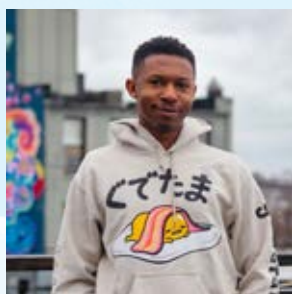
Moisés Salazar is a Mexican-American tenor born and raised in the state of California. Moisés graduated with a Bachelor's in Music from the University of Toledo in 2018. In 2021, Moisés performed at Opera Theatre of Saint Louis as a Gerdine Young Artist.



## MADELINE SLETTEDAHL, PIANIST

“Extraordinarily expressive” (*Seen and Heard International*) pianist and coach Madeline Slettedahl joins the Houston Grand Opera music staff for the 2021-22 season. Recent appointments include music staff for Opera Theatre of Saint Louis in the summers of 2020 (virtual) and 2021, and a three-year tenure at the Lyric Opera of Chicago as the Pianist and Ensemble Coach for the Patrick G. & Shirley W. Ryan Opera Center. Madeline holds degrees in Collaborative Piano and Piano Performance, from the Shepherd School of Music at Rice University, and Western Washington University, respectively.

## Jazz St. Louis Musicians



**ANTONIO FOSTER**



**KENDRICK SMITH**



**BERNARD TERRY**

Pianist Antonio Foster, saxophonist Kendrick Smith, and bassist Bernard Terry are among St. Louis's most in-demand musicians, continuing a long tradition of incredible jazz musicians from the Gateway City. Terry provides the foundation for the trio with his rock-solid basslines, giving Foster's keys and Smith's saxophone the ability to soar to the peak of expression and soulfulness.

# THANK YOU TO OUR GENEROUS SPONSORS

## PRESENTED BY

**Edward Jones**<sup>®</sup>

## HOSTED BY

**James Berges &  
Elizabeth Mannen Berges**

---

## LEADING ROLE

**Pat & Mark Burkhart**

**CENTENE**  
Charitable Foundation

## MAESTRO

**Kim and Tim Eberlein**

**Lannis Hall**

**Sally and Ned Lemkemeier**

**Annemarie and Matt Schumacher**

## CONDUCTOR

**John Antes**

**Frank Austin Jr. and Virginia  
Weldon**

**Barbara Bryant**

**Jen and David Grossman**

**Susie Knopf and Richard Levey**

**Lisa and Brandon Mann**

**Peggy and Jerry Ritter**

**Susan and David Sherman**

**Jennifer and Nick Tompras**

## BRAVO

**Barbara and Barry Beracha**

**Valerie Bell and Kelvin  
Westbrook**

**Barb and Dan Bindler**

## BRAVO (continued)

**Karen and James Castellano**

**Linda and Steve Finerty**

**Ed and Julie Glotzbach**

**Teri and David Griege**

**Elliott Hall**

**Fred Hall**

**Vicki and Douglas Hill**

**Nancy and John Hillhouse**

**Margie and Martin Jaffe**

**Jo Ann Kindle and the  
MacCarthy Foundation**

**Nancy and Ken Kranzberg**

**Rosalyn and Charles  
Lowenhaupt**

**Beverly McCutcheon**

**Jan and Dean Mueller**

**Susan and Jack Musgrave**

**John H. Russell**

**Pam and Greg Trapp**

## MEDIA SPONSOR





## EVENT CO-CHAIRS

Kim Eberlein and Susan Sherman

## WE APPRECIATE OUR AMAZING TEAM

### *HONORARY PHYSICIAN CHAIR*

Dr. Lannis Hall

### *HONORARY CHAIR*

Amber Simpson

### *STEERING COMMITTEE*

Elizabeth Mannen Berges	Teri Griego	Susan Musgrave
Barb Bindler	Alice Handelman	Suzie Nall
Spencer Burke	Naretha Hopson	Amber Simpson
Pat Burkhart	Margie Jaffe	Kimberly Singer
Mueriel Carp	Joni Karandjeff	Annemarie Schumacher
Laura Fields	Susie Knopf	Yona Strasberg
Missy Fish	Phyllis Langsdorf	Fran Zamler
Joe Gfaller	Sheila Michalski	
	Jack Musgrave	

### *HOST COMMITTEE*

Esther and Earl Beeks Jr.	Sherrill Jackson
Nanci and James Bobrow	Marylen Mann
Sara and Jack Burke	Sarah and Peter Palermo
Carmen Dence	Maria and Philip Taxman
Julie and David Drier	Amanda Trudell Cambridge and Paul Cambridge
Ida Early	Anne von der Heydt
Carolyn Farrell	Grace and Frank Yin
Michelle and William Hawkins	

# PHYSICIANS AND SCIENTISTS FOR THE CAUSE

## *CHAIRS*

**Ryan Fields, MD**

**Jeff Michalski, MD, MBA**

**Katherine Weilbaecher, MD**

Nancy Bartlett, MD

Debbie Bennett, MD

William Chapman, MD

Milan Chheda, MD

Timothy Eberlein, MD

Olga Green, PhD

Lannis Hall, MD, MPH

William Hawkins, MD

Angela Hirbe, MD, PhD

Patricia Ribeiro Pereira, PhD

Janet Scheel, MD

Paul Scheel Jr., MD, MBA

Steven Strasberg, MD

Nikolaos Trikalinos, MD

Deborah Veis, MD, PhD

Gary Wasserman, MD

# SPECIAL THANKS

**We are indebted to the following individuals and organizations for their extraordinary dedication and generosity to Sing for Siteman!**

**Opera Theatre of Saint Louis** for their partnership and providing superb artists, artistic direction and assistance with promoting the event.

**Gene Dobbs Bradford** and **Bob Bennett** from **Jazz St. Louis** for providing the beautiful backdrop of Jazz at the Bistro for this year's event.

**Cheryl Marting** for "fine tuning" Jazz St. Louis' piano.

**Al Roker** and **Ellie Kemper** for lending their talent and voices to our cause.

**Diana Ford, Laura Maurice** and the team at **The Vault Luxury Resale** for their partnership in producing "Fashion Fights Cancer" and helping to make it a smashing success.

**Faith Berger, Scott Brandt, Cbabi Bayoc, Michael Drummond, Dianne Isbell, Afton Johnson, Ashley Maurice, Audra Danielle Noyes, Yvonne Osei, Shevare' Perry, Marian Steen, Courtney Tharpe, and Carlos Zamora** for lending their talent in transforming a traditional white lab coat to 12 amazing pieces of art for "Fashion Fights Cancer".

**Busy B's Bakery** for the delicious Sing for Siteman cookies provided for this event.

**Pat and Mark Burkhart** and **Kim and Tim Eberlein** for sponsoring our Party Packs.

## TRANSLATIONS

### “Parigi, o cara”

*La traviata*

#### ALFREDO AND VIOLETTA

Not man or devil, my angel,  
Shall ever part you from me again.

#### ALFREDO

We'll leave Paris, my dearest,  
Together we'll go through life.  
In reward for your past sorrows,  
You'll bloom into health again.  
Breath of life, sunshine you'll be to me,  
All the years to come will smile on us.

#### VIOLETTA

We'll leave Paris, my dearest,  
Together we'll go through life.

#### ALFREDO

Yes.

#### VIOLETTA

In reward for past sorrows,  
I shall bloom into health again.  
Breath of life, sunshine you'll be to me,  
All the years to come will smile on us.  
Ah, no more!  
Let's go to church, Alfredo,  
And give thanks for your return.

---

### “Pace, pace”

*La forza del destino*

Peace, peace, O God!  
Cruel misfortune  
compels me, alas, to languish;  
my suffering has lasted for so many years,  
as profound as on the first day.  
Peace, peace, O God!

CONTINUED >>

I loved him, it is true! But God had blessed him  
with such beauty and courage  
that I love him still, and cannot efface his image  
from my heart.

Fatal destiny! A crime  
has divided us down here!

Alvaro, I love you and in heaven above it is written  
that I shall never see you again!

O God, God, let me die, for only death  
can bring me peace.

In vain this soul of mine here sought peace,  
a prey to so much woe.

She goes to a rock on which the Father Superior has left food for her.

Wretched bread, you come to prolong  
my inconsolable life. - But who comes here,  
daring to profane this sacred retreat?

A curse! A curse!

---

## **“Granada”**

by Agustín Lara

Granada, I'm falling under your spell  
And if you could speak what a fascinating tale you would tell  
Of an age the world has long forgotten  
Of an age that weaves the silent magic in Granada today  
The dawn in the sky greets the day with a sigh for Granada  
For she can remember the splendour that once was Granada  
It still can be found in the hills all around as I wander along  
Entranced by the beauty before me  
Entranced by a land full of sunshine and flowers and song  
And when day is done and the sun starts to set in Granada  
I envy the blush of the snow clad Sierra Nevada  
For soon it will welcome the stars  
While a thousand guitars play a soft Habanera  
Then moonlit Granada will live again  
The glory of yesterday romantic and gay.

**“Mira, o Norma”**

*Norma*

**ADALGISA**

Were you calling me, Norma? How pale  
And sad your face!

**NORMA**

The pallor of death  
I must confess my shame to you. I ask  
One thing, which you will do  
If my present grief and my grief to come  
Deserves pity.

**ADALGISA**

I promise to do anything.

**NORMA**

Swear!

**ADALGISA**

I swear!

**NORMA**

Then hear me. I have resolved  
To cleanse this earth  
Of my existence. I cannot take these poor children  
With me: I entrust them to you.

**ADALGISA**

Oh Heaven!  
To me?

**NORMA**

Take them to the Roman camp.  
To him whom I dare not name.

**ADALGISA**

What are you asking?

**NORMA**

May he be  
Less cruel a husband to you. I forgive him,  
And now I shall die.

**ADALGISA**

Husband! No, never!

## “Seguedilla”

*Carmen*

I know a bar in Sevilla,  
Run by my friend Lillas Pastia;  
I go there to sing and to dance  
And to drink Manzanilla,  
In the bar that’s run by Lillas Pastia.  
But it is dull to be alone.  
Real pleasure is for two to share,  
So, just to keep me company,  
I want to take my lover there!  
Who can he be? All that has ended  
For yesterday I threw him out!  
My broken heart’s easily mended,  
Now it is free for casting about!  
I always have a dozen others,  
But none of them are to my taste.  
I’m ready for another lover.  
If you want me... no time to waste!  
Who wants my heart? You can take it!  
You have arrived at the right time.  
Let us go; I can hardly wait.  
I am yours if you will be mine.  
And at that bar in Sevilla,  
Run by my friend Lillas Pastia,  
We’ll be there to sing and to dance  
And to drink Manzanilla,  
If you come with me to see Lillas Pastia!  
My handsome officer is not a captain,  
Nor is he a lieutenant,  
But surely a sergeant  
Will do just as well for a gypsy girl,  
So I think I’ll make do with him!  
On the way, I’ll give you a push;  
I shall push you hard  
And you fall flat upon your face.  
As you fall let me go,  
And then leave it to me,  
For love is like a gypsy child

*CONTINUED >>*

Who lives a life that is as free as air.  
If you don't love me, I shall love you,  
But if I do you must beware!  
If you don't love me at all, I'll love you!  
But if I love you,  
You must beware!

---

**“O soave fanciulla”**

*La bohème*

**RODOLFO**

Oh! lovely girl! Oh, sweet face  
bathed in the soft moonlight.  
I see in you the dream  
I'd dream forever!

**MIMÌ**

(Ah! Love, you rule alone!...)

**RODOLFO**

Already I taste in spirit  
The heights of tenderness!

**MIMÌ**

(You rule alone, O Love!)

**RODOLFO**

Already I taste in spirit  
the heights of tenderness!  
Love trembles in our kiss!

**MIMÌ**

(How sweet his praises  
enter my heart ...  
Love, you alone rule!)  
Rodolfo kisses her.  
No, please!

**RODOLFO**

You're mine!

**MIMÌ**

Your friends are waiting.

**RODOLFO**

You send me away already?

**MIMÌ**

I daren't say what I'd like ...

**RODOLFO**

Tell me.

**MIMÌ**

If I came with you?

**RODOLFO**

What? Mimi!  
It would be so fine to stay here.  
Outside it's cold.

**MIMÌ**

I'd be near you!

**RODOLFO**

And when we come back?

**MIMÌ**

Who knows?

**RODOLFO**

Give me your arm, my dear ...

**MIMÌ**

Your servant, sir ...

**RODOLFO**

Tell me you love me!

**MIMÌ**

I love you.

**RODOLFO AND MIMÌ**

as they go out  
Beloved! My love! My love!



## **“You’ll Never Walk Alone”**

*Carousel*

When you walk through a storm  
Hold your head up high  
And don’t be afraid of the dark

At the end of a storm  
There’s a golden sky  
And the sweet silver song of a lark

Walk on through the wind  
Walk on through the rain  
Though your dreams be tossed and blown

Walk on, walk on  
With hope in your heart  
And you’ll never walk alone  
You’ll never walk alone

Walk on, walk on  
With hope in your heart  
And you’ll never walk alone  
You’ll never walk alone

## **ABOUT SITEMAN CANCER CENTER**

Siteman Cancer Center, ranked among the top cancer treatment centers by U.S. News & World Report, also is one of only a few cancer centers to receive the highest rating of the National Cancer Institute (NCI) – “exceptional.” Comprising the cancer research, prevention and treatment programs of Barnes-Jewish Hospital and Washington University School of Medicine in St. Louis, Siteman is Missouri’s only NCI-designated Comprehensive Cancer Center and the state’s only member of the National Comprehensive Cancer Network.

More than 660 Washington University physicians and scientists treat 70,000 people, including nearly 12,000 newly diagnosed cancer patients, each year at Siteman, making it one of the largest U.S. cancer centers. Siteman offers patients a diverse spectrum of more than 400 active therapeutic clinical trials, which are investigational cancer therapies largely unavailable elsewhere in the region.

Care is provided at six locations: Washington University Medical Campus; Northwest HealthCare, part of Christian Hospital, in north St. Louis County; Barnes-Jewish West County Hospital in Creve Coeur, Siteman Cancer Center–South County in south St. Louis County; Barnes-Jewish St. Peters Hospital in St. Charles County; and Memorial Hospital Shiloh in Illinois.

**SHARE TONIGHT'S MEMORIES OF OUR  
12<sup>TH</sup> ANNUAL VIRTUAL EVENT USING THE HASHTAG**

**#SINGFORSITEMAN**

Thank you for supporting Siteman Cancer Center. If you have been inspired by this evening's artists and program and would like to make a tax-deductible donation, please visit us online at:

[singforsiteman.org](https://singforsiteman.org)

or make checks payable to "Siteman Cancer Center"  
and mail to:

Siteman Cancer Center/WashU  
c/o: Sing for Siteman  
7425 Forsyth Blvd.  
MSC 1204  
St. Louis, MO 63105-2161

314.935.4725 or 877.552.1506



# SITEMAN CANCER CENTER

 Washington  
University in St. Louis  
SCHOOL OF MEDICINE

 BJC HealthCare